

Agenda

01 Data Discovery

02 Intro to PROC SQL

03 Demo

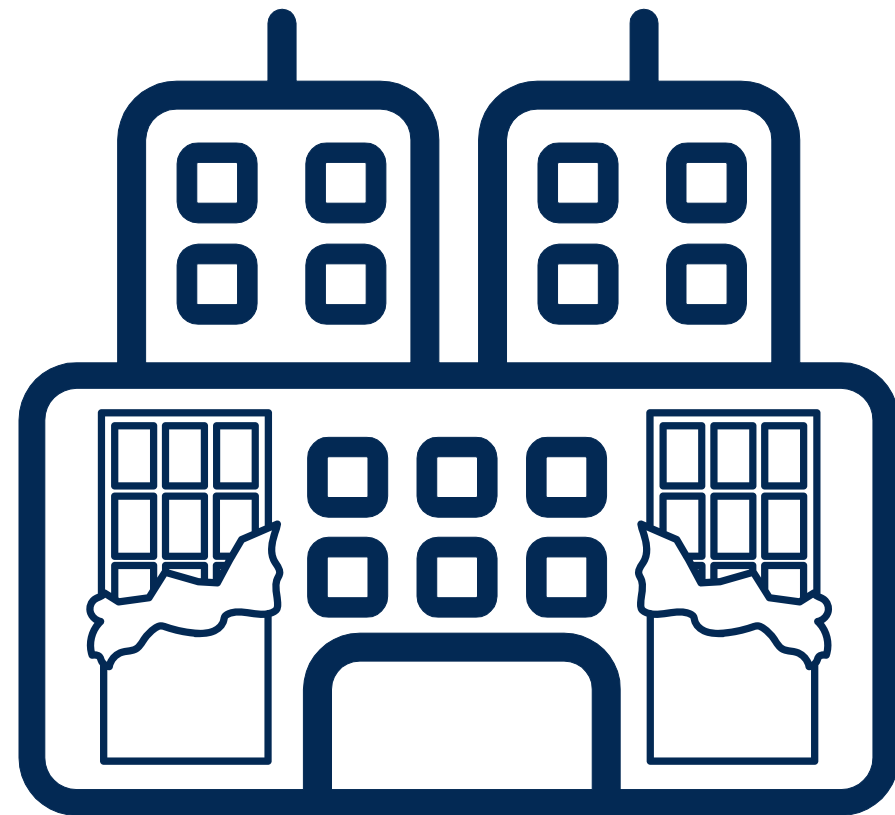
Agenda

01 Data Discovery

02 Intro to PROC SQL

03 Demo

Data Discovery



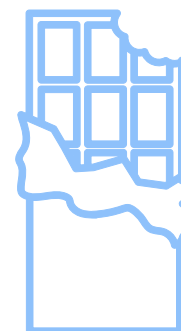
Chocolate Enterprise



choc_enterprise_customer



choc_enterprise_orders



choc_enterprise_item

Agenda

01 Data Discovery

02 Intro to PROC SQL

03 Demo

Agenda

01 Data Discovery

02 Intro to PROC SQL

03 Demo

Intro to PROC SQL

Initiates SQL procedure



```
PROC SQL <options>;  
    ... statements ...;  
QUIT;
```

Intro to PROC SQL

```
PROC SQL <options>;  
    ... statements ...;  
QUIT;
```

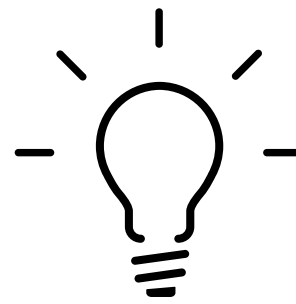


Terminates SQL procedure

Intro to PROC SQL

```
PROC SQL <options>;  
    ... statements ...;  
QUIT;
```

Series of statements or clauses make up a **query**



Query: What question do you want to answer with your data?

Intro to PROC SQL

```
PROC SQL <options>;  
SELECT col1, col2  
    FROM inputTable;  
QUIT;
```

Columns to appear in results



Intro to PROC SQL

```
PROC SQL <options>;  
SELECT col1, col2  
      FROM inputTable;  
QUIT;
```

Columns to appear in results

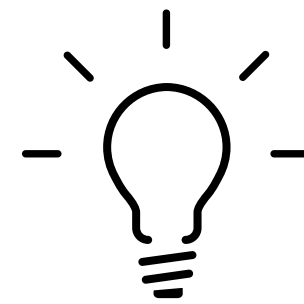


Data sources

Intro to PROC SQL

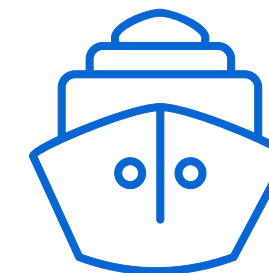
Additional optional clauses:

```
PROC SQL <options>;  
SELECT col1, col2  
    FROM inputTable  
    <WHERE clause>  
    <GROUP BY clause>  
    <HAVING clause>  
    <ORDER BY clause>;  
QUIT;
```



Mnemonic:

So
Few
Workers
Go
Home
On Boats



Intro to PROC SQL

Additional optional clauses:

```
PROC SQL <options>;  
SELECT col1, col2  
  FROM inputTable  
  <WHERE clause>  
  <GROUP BY clause>  
  <HAVING clause>  
  <ORDER BY clause>;  
QUIT;
```

Filter rows of data



Intro to PROC SQL

Additional optional clauses:

```
PROC SQL <options>;  
SELECT col1, col2  
  FROM inputTable  
  <WHERE clause>  
  <GROUP BY clause>  
  <HAVING clause>  
  <ORDER BY clause>;  
QUIT;
```

Process data in groups



Intro to PROC SQL

Additional optional clauses:

```
PROC SQL <options>;  
SELECT col1, col2  
  FROM inputTable  
  <WHERE clause>  
  <GROUP BY clause>  
  <HAVING clause>  
  <ORDER BY clause>;  
QUIT;
```

Works with GROUP BY to
process data in groups

Intro to PROC SQL

Additional optional clauses:

```
PROC SQL <options>;  
SELECT col1, col2  
  FROM inputTable  
  <WHERE clause>  
  <GROUP BY clause>  
  <HAVING clause>  
  <ORDER BY clause>;  
QUIT;
```

Determines order of rows

Intro to PROC SQL

Other statements:

```
PROC SQL;  
CREATE TABLE tableName AS;  
QUIT;
```

Creates a table from the query rather than a report

Intro to PROC SQL

Other statements:

```
PROC SQL;  
CREATE TABLE tableName AS;  
QUIT;
```

Creates a table from the query rather than a report

```
PROC SQL;  
DESCRIBE TABLE tableName;  
QUIT;
```

Prints column names and attributes to the log

Agenda

01 Data Discovery

02 Intro to PROC SQL

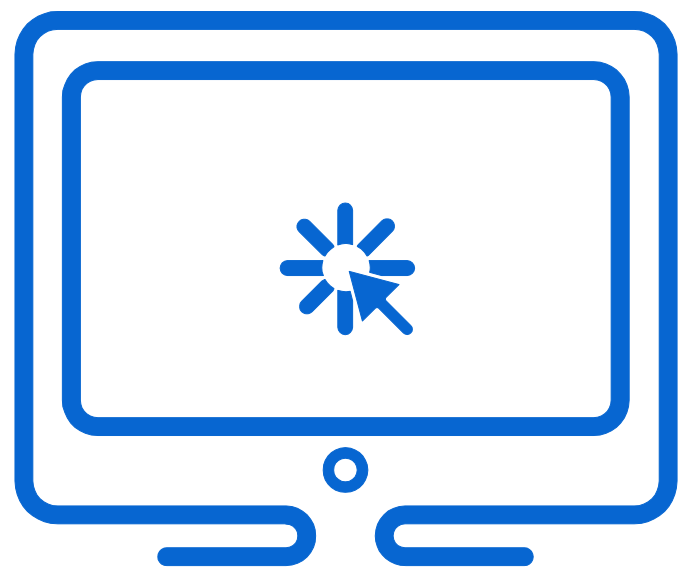
03 Demo

Agenda

01 Data Discovery

02 Intro to PROC SQL

03 Demo



Demonstration

[CarleighJoCrabtree/SESUG2025 PROC SQL Case Study:](#)
[SESUG 2025 PROC SQL Case Study](#)